



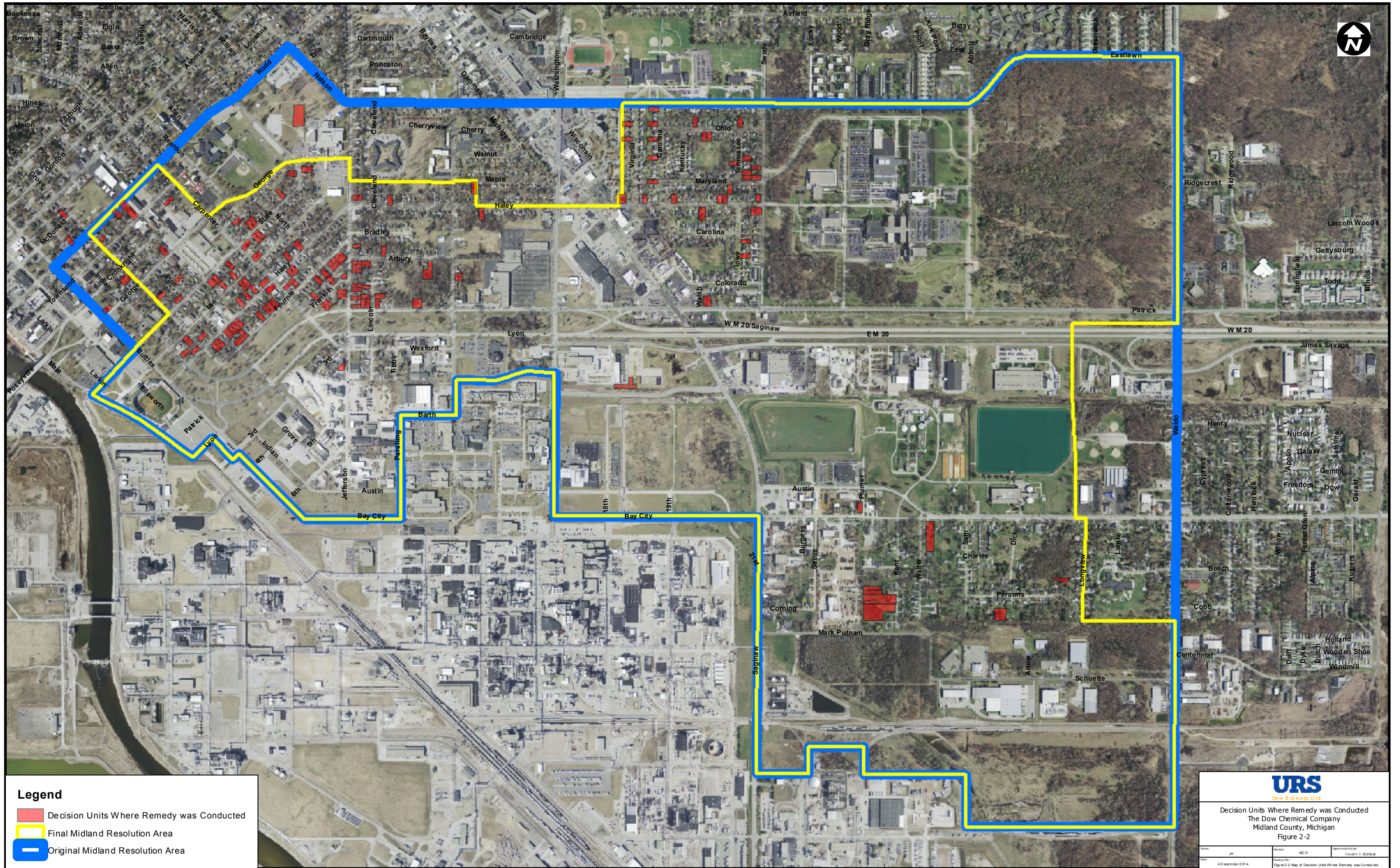
URS
 Dow Business Unit

Facility Location
 The Dow Chemical Company
 Michigan Operations
 Figure 2-1

Drawn: JLH Checked: BW Approximate Scale: 1" = 5280'
 Date: 10/10/2014 Drawing File: Figure 1-1 Facility Location.mxd

Legend

-  Dow Facility Boundary
-  City of Midland



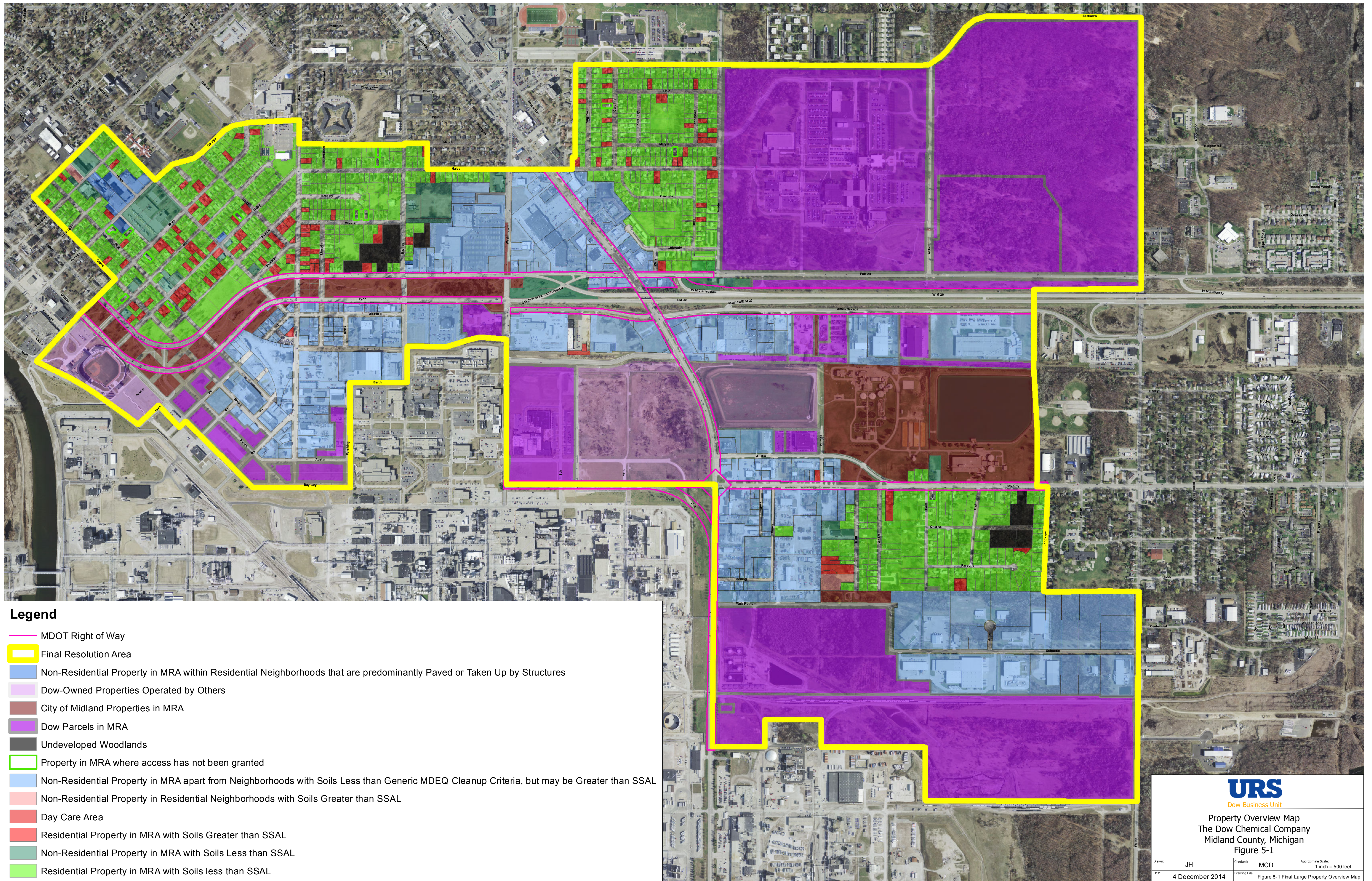
Legend

- Decision Units Where Remedy was Conducted
- Final Midland Resolution Area
- Original Midland Resolution Area



Decision Units Where Remedy was Conducted
 The Dow Chemical Company
 Midland County, Michigan
 Figure 2-2

Drawn: JH	Checked: MCD	Approved: JH
Date: 4/10/2014	Scale: 1 inch = 1,000 feet	Figure 2-2 Map of Decision Units Where Remedy was Conducted



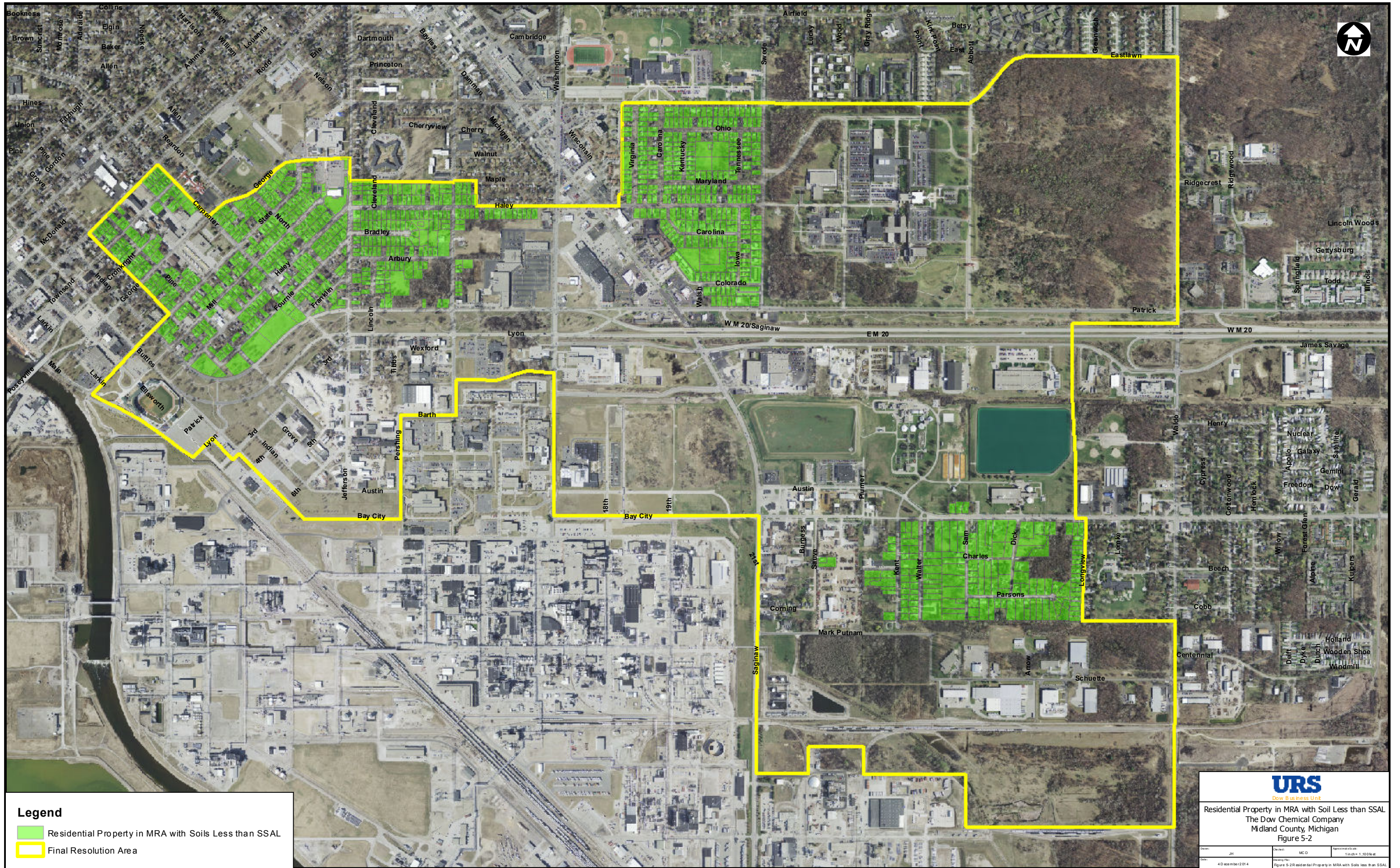
Legend

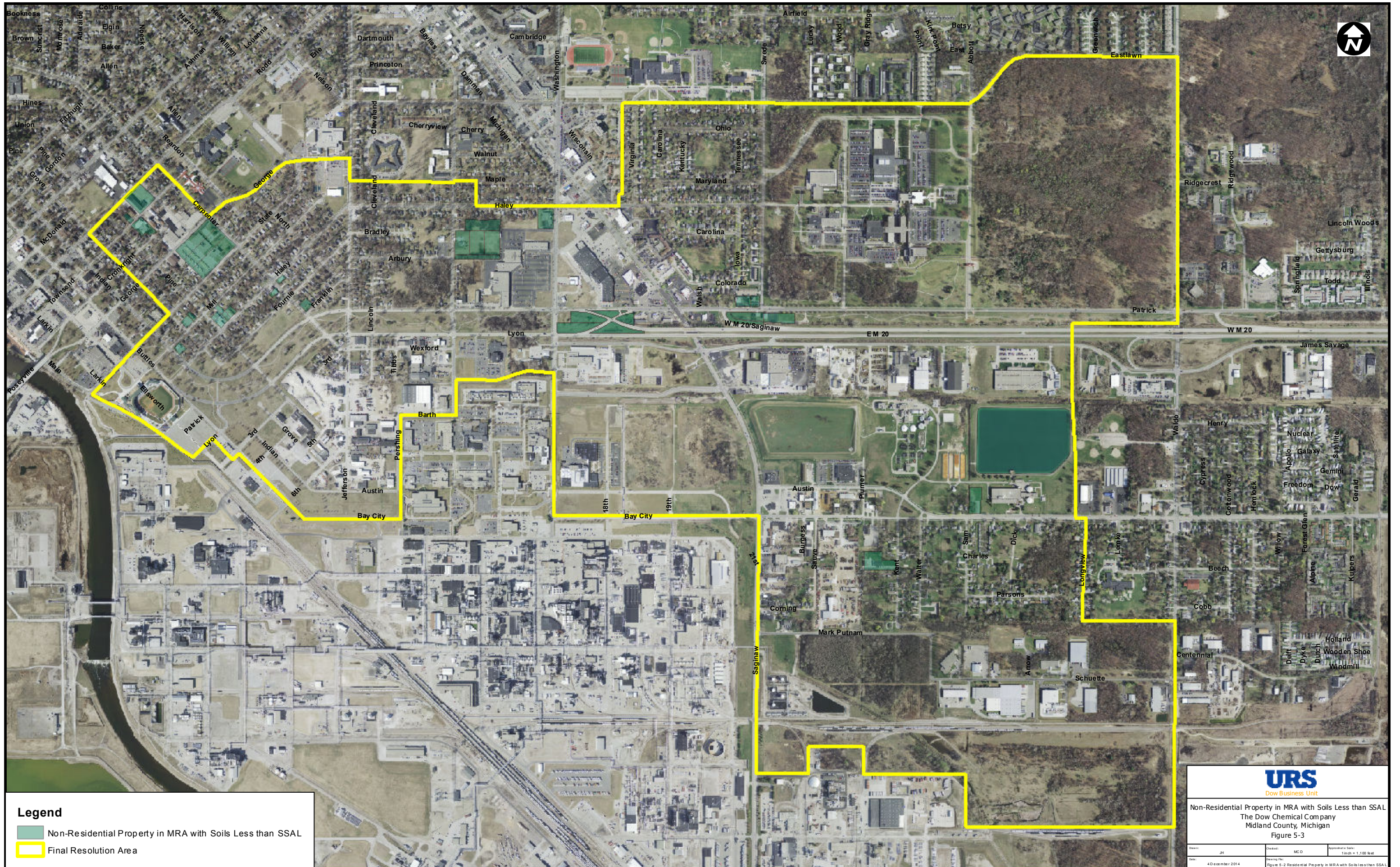
- MDOT Right of Way
- Final Resolution Area
- Non-Residential Property in MRA within Residential Neighborhoods that are predominantly Paved or Taken Up by Structures
- Dow-Owned Properties Operated by Others
- City of Midland Properties in MRA
- Dow Parcels in MRA
- Undeveloped Woodlands
- Property in MRA where access has not been granted
- Non-Residential Property in MRA apart from Neighborhoods with Soils Less than Generic MDEQ Cleanup Criteria, but may be Greater than SSAL
- Non-Residential Property in Residential Neighborhoods with Soils Greater than SSAL
- Day Care Area
- Residential Property in MRA with Soils Greater than SSAL
- Non-Residential Property in MRA with Soils Less than SSAL
- Residential Property in MRA with Soils less than SSAL



Property Overview Map
The Dow Chemical Company
Midland County, Michigan
Figure 5-1

Drawn: JH	Checked: MCD	Approximate Scale: 1 inch = 500 feet
Date: 4 December 2014	Drawing File: Figure 5-1 Final Large Property Overview Map	





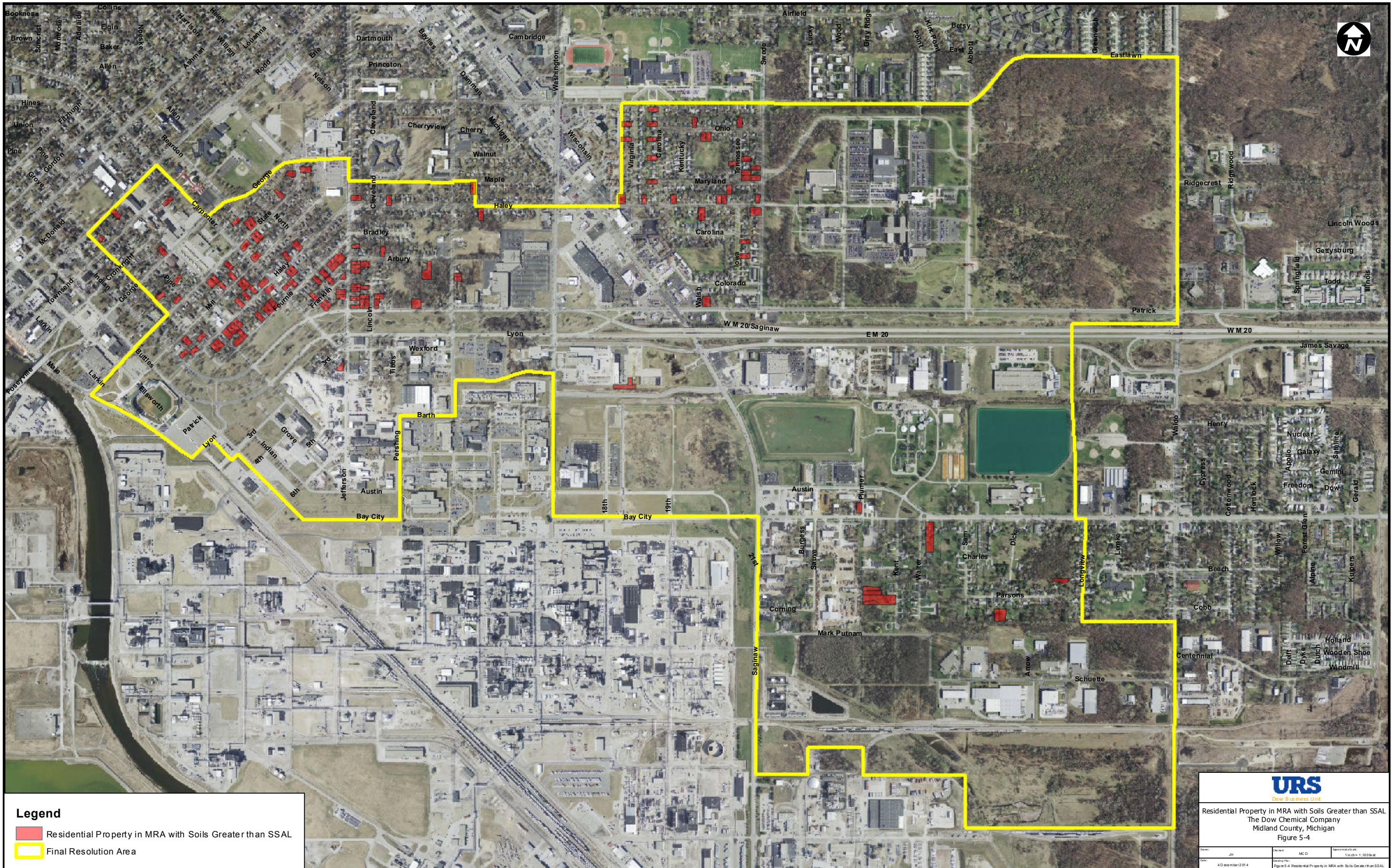
Legend

- Non-Residential Property in MRA with Soils Less than SSAL
- Final Resolution Area



Non-Residential Property in MRA with Soils Less than SSAL
 The Dow Chemical Company
 Midland County, Michigan
 Figure 5-3

Drawn: JH	Checked: MCD	Assemble Scale: 1 inch = 1.00 feet
Date: 4 December 2014	Drawing No: Figure 5-2 Residential Property in MRA with Soils less than SSAL	



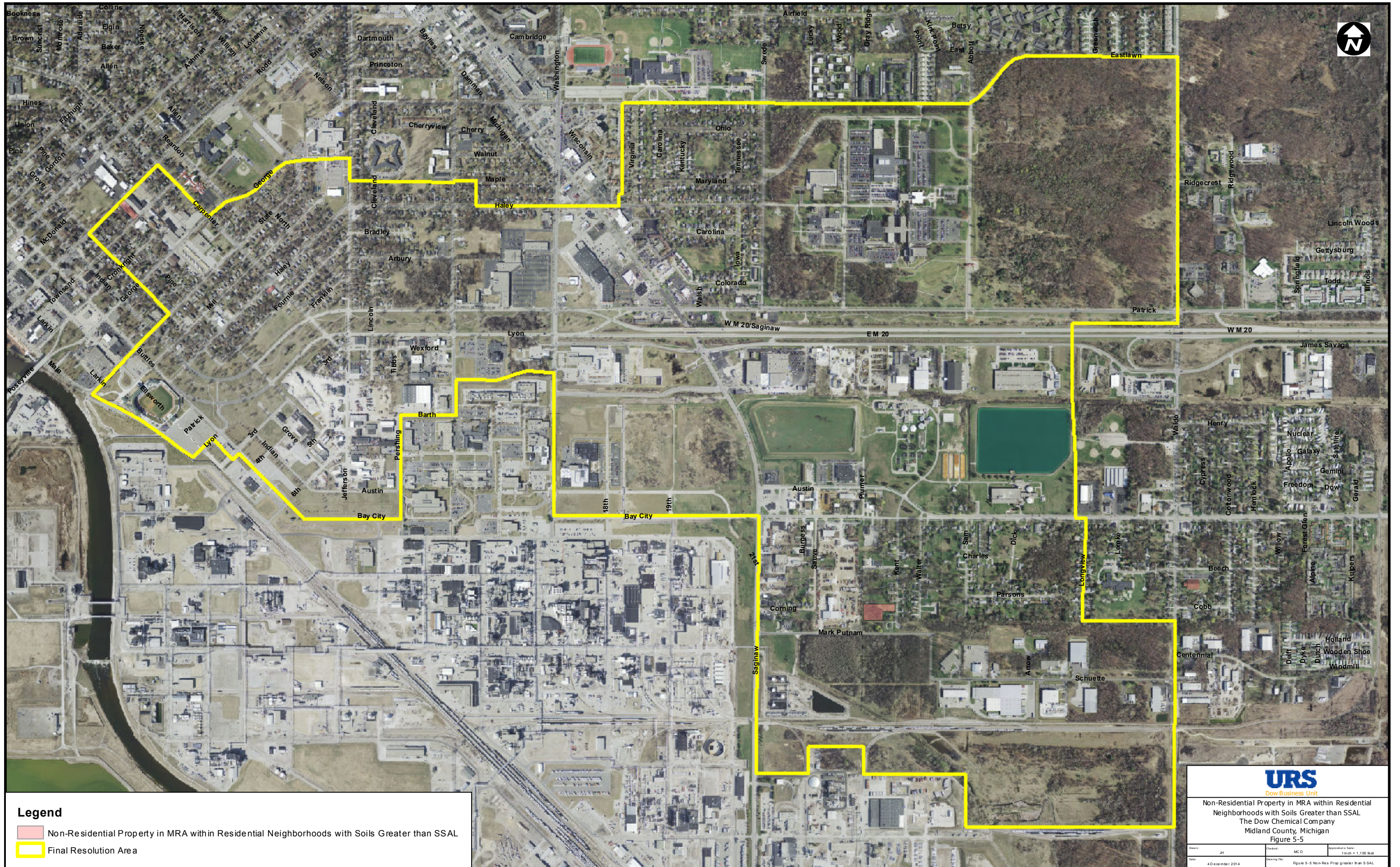
Legend

- Residential Property in MRA with Soils Greater than SSAL
- Final Resolution Area

URS
Dow Business Unit

Residential Property in MRA with Soils Greater than SSAL
The Dow Chemical Company
Midland County, Michigan
Figure 5-4

Date: JH	Drawn: MCD	Approved: JH
Scale: 4 D (as of 2/01/4)	Drawing No: Figure 5-4 Residential Property in MRA with Soils Greater than SSAL	Scale: 1 in ch = 1,100 ft at



Legend

- Non-Residential Property in MRA with Residential Neighborhoods with Soils Greater than SSAL
- Final Resolution Area



Dow Business Unit

Non-Residential Property in MRA within Residential Neighborhoods with Soils Greater than SSAL
 The Dow Chemical Company
 Midland County, Michigan
 Figure 5-5

Drawn: JH	Checked: MCD	Assemble Date: 11/20/14
Date: 4 December 2014	Drawing No: Figure 5-5 Non-Res Prop greater than SSAL	